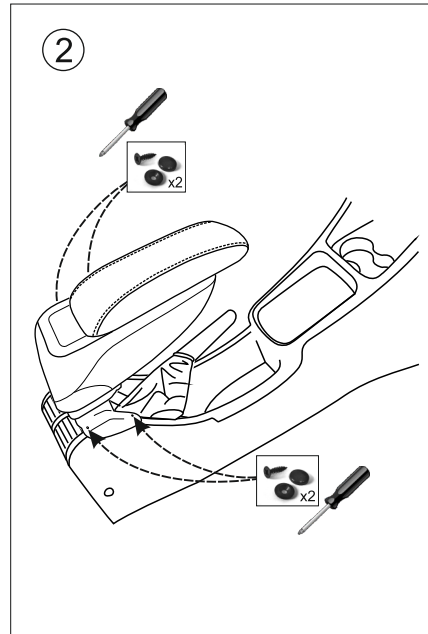
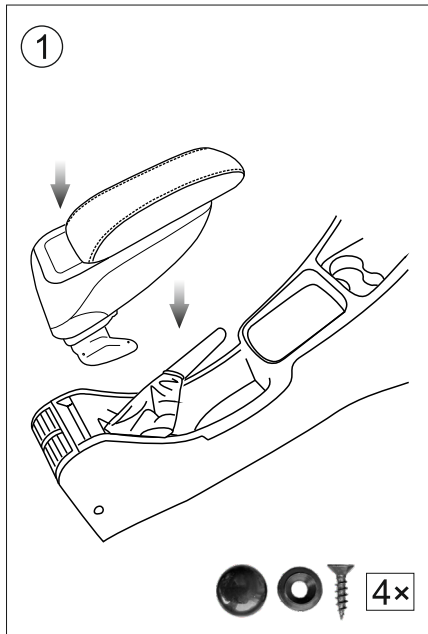
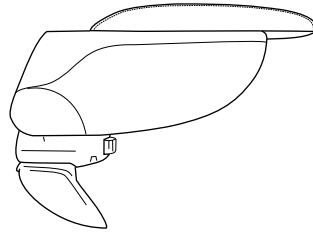


 CENTER ARMREST  
 MITTELARMLEHNE

MOUNTING NOTE  
MONTAGEANLEITUNG

# OPEL ZAFIRA A 1999 -



**irmscher**

IrmscherAutomobilbauGmbH&Co.KG  
D-73630 Remshalden-Grunbach

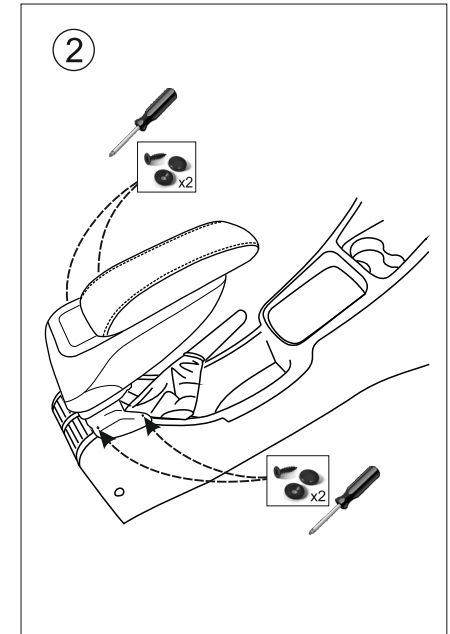
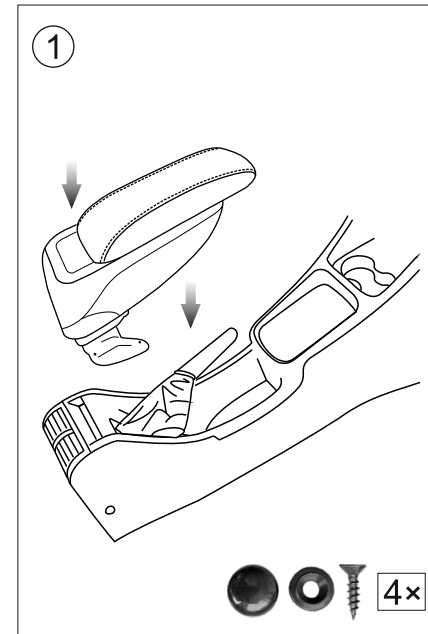
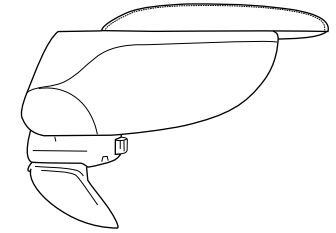
7 32 17 070

Tel.:07151/971-300  
Fax.:07151/971-238

 CENTER ARMREST  
 MITTELARMLEHNE

MOUNTING NOTE  
MONTAGEANLEITUNG

# OPEL ZAFIRA A 1999 -



**irmscher**

IrmscherAutomobilbauGmbH&Co.KG  
D-73630 Remshalden-Grunbach

7 32 17 070

Tel.:07151/971-300  
Fax.:07151/971-238